



MIDWEST PLAINS REGIONAL

WICHITA, KS • JULY 23-27



TOURNAMENT DETAILS

THE MIDWEST PLAINS REGION OF BABE RUTH LEAGUE IS PROUD TO PARTNER WITH THE GENESIS SPORTS COMPLEX AND THE CITY OF WICHITA, KANSAS FOR THIS YEAR'S MIDWEST PLAINS REGIONAL TOURNAMENT.

TEAM FEE INCLUDES:

- GAME BALLS
- UMPIRES
- AWARDS
- 4 GAME MINIMUM
- CONSOLATION AND CHAMPIONSHIP BRACKETS
- WS QUALIFYING DIVISION CHAMPIONS ADVANCE TO WORLD SERIES AND RECEIVE TRAVEL STIPEND

\$350 TEAM FEE

2025 MIDWEST PLAINS REGIONAL INFORMATION

TABLE OF CONTENTS

ABOUT WICHITA • P. 2

ABOUT COMPLEX • P. 3

ACCOMODATIONS • P. 4

ADMISSION, PHOTOS, SOUVENIRS • P. 5

DIVISIONS AND RULES • P. 6

WORLD SERIES INFO • P. 7

 BRLMWPREGION.COM

ABOUT WICHITA

WICHITA IS HOME TO MANY EXCITING ATTRACTIONS AND MUSEUMS INCLUDING THE SEVENTH-LARGEST ZOO IN THE UNITED STATES AND THE STATE'S MOST-VISITED OUTDOOR ATTRACTION, THE SEDGWICK COUNTY ZOO. FIND UNENDING FAMILY-FUN AND EDUCATIONAL EXPERIENCES IN EVERY NEIGHBORHOOD OF THE CITY, JAMPACKED WITH CULTURAL EXPERIENCES, SHOPPING AND DELICIOUS LOCAL RESTAURANTS. PLAN YOUR VISIT TO WICHITA TODAY!



SINCE ITS EARLY DAYS, WICHITA HAS EVOLVED INTO A VIBRANT, MULTICULTURAL CITY, WITH MANY NEW EATERIES, SHOPS, BREWERIES AND OUTDOOR SPACES LIKE NAFTZGER PARK, A NEWLY-REDESIGNED URBAN PARK IN DOWNTOWN WICHITA AND REGULAR GATHERING SPOT FOR FOOD TRUCKS, AND REVOLUTSIA, A SHIPPING CONTAINER DEVELOPMENT WITH SHOPPING AND DINING.

FIRST FRIDAYS ARE A WAY TO EXPERIENCE THE LOCAL ART SCENE, WHICH EARNED WICHITA A SPOT IN EXPEDIA'S LIST OF MOST ARTISTIC TOWNS IN THE UNITED STATES. ADDITIONALLY, EXPANSION OF THE CITY'S FREE Q-LINE TRANSPORTATION, BIKE SHARE ICT AND ELECTRIC SCOOTERS HAVE IGNITED VIBRANCY INTO THE CITY'S CORE. LIVELY FESTIVALS LIKE RIVERFEST, AUTUMN & ART AND THE TALLGRASS FILM FESTIVAL ALSO KEEP WICHITA BUZZING WITH EXCITEMENT THROUGHOUT THE YEAR.

ABOUT GENESIS SPORTS COMPLEX

GENESIS SPORTS COMPLEX

221 N CROWNE DR, GODDARD, KS 67052

GENESIS SPORTS COMPLEX IN GODDARD, KANSAS, IS A PREMIER DESTINATION FOR SPORTS ENTHUSIASTS OF ALL AGES. FEATURING 10 STATE-OF-THE-ART BASEBALL AND SOFTBALL FIELDS, THIS COMPLEX IS DESIGNED FOR COMPETITIVE PLAY, TRAINING, AND TOURNAMENTS. OUR MISSION AT GENESIS SPORTS COMPLEX IS TO BE MORE THAN JUST A BASEBALL AND SOFTBALL FACILITY—WE STRIVE TO BE A PLACE WHERE LIFELONG MEMORIES ARE MADE WITH TEAMMATES, FRIENDS, AND FAMILY WITH WELL-MAINTAINED TURF, AMPLE SEATING FOR SPECTATORS, AND CONVENIENT CONCESSIONS FEATURING TWO SERVICE WINDOWS AND BEER OPTIONS.



BLAST OFF BAY AND THE SANDBOX



BLAST OFF BAY IS AN OUT-OF-THIS-WORLD INDOOR WATERPARK IN GODDARD, KS. STANDING ALMOST 30 FEET TALL AND 300 FT LONG, OUR TUBE SLIDES ARE SURE TO SEND RIDERS BLASTING STRAIGHT INTO HYPER SPEED.

SANDBOX GODDARD IS AN EXCITING NEW OUTDOOR ENTERTAINMENT COMPLEX WITH WEST WICHITA'S MOST PICKLEBALL COURTS WITH FIVE INDOOR AND FIVE OUTDOOR, A BEACH-WORTHY FOURTEEN SAND VOLLEYBALL COURTS, AND A BROAD RANGE OF ACTIVITIES FOR BOTH YOUTH AND ADULTS TO ENJOY! AND AFTER THE DIGS AND DINKS, IT'S TIME FOR DRINKS AT THE AREA'S PREMIER RESTAURANT WITH A FULL MENU OF BURGERS, STEAKS, AND SANDWICHES.



ACCOMODATIONS

BABE RUTH LEAGUE'S MIDWEST PLAINS REGION HAS PARTNERED WITH EVENTCONNECT TO BE THE OFFICIAL ACCOMMODATIONS PLATFORM AND BOOKING ENGINE FOR ALL TEAMS! THIS IS A STAY-TO-PLAY EVENT.

DISCOUNTED HOTEL RATES AT TEAM FRIENDLY PROPERTIES ARE NOW AVAILABLE IN THE EVENT HOTEL FEED. TO GAIN ACCESS, PLEASE REGISTER YOUR TEAM, CONTACT YOUR COACH, OR REACH OUT TO THE EVENTCONNECT CUSTOMER SUCCESS TEAM.

FOR A TEAM MANAGER LOOKING FOR ASSISTANCE IN ACTIVATING A GROUP BLOCK OF ROOMS, PLEASE CONTACT EVENTCONNECT EVENT SPECIALIST AT 1-888-723-2064 EXT. 823 OR BY EMAIL AT EVENTS@EVENTCONNECT.IO

FOR A TEAM MEMBER LOOKING FOR ASSISTANCE IN REGARDS TO A RESERVATION, PLEASE CONTACT OUR CUSTOMER SUCCESS TEAM AT 1-888-723-2064 OR BY EMAIL AT SUPPORT@EVENTCONNECT.IO



**Event
Connect™**

**STAY-TO-PLAY
EVENT**



REGIONAL CONTACT INFO

CAL RIPKEN DIVISION DIRECTOR
RICH GROSS - MISSOURI STATE COMMISSIONER
C: (573) 225-5836
E: STATECOMMISSIONER@MOBABERUTH.COM

BABE RUTH DIVISION DIRECTOR
TODD CORROW - MINNESOTA STATE COMMISSIONER
C: (320) 291-4102
E: TODD.CORROW@GMAIL.COM

MIDWEST PLAINS REGIONAL COMMISSIONER
TIM KUNTZ
C: (701) 220-2773
E: TKUNTZ@BIS.MIDCO.NET

NATIONAL COMMISSIONER
MICHAEL SOLANIK
P: 609-278-2316
E: MICHAEL@BABERUTHLEAGUE.ORG

ADMISSION

ALL TICKETS MUST BE PURCHASED THROUGH YOUR EVENT CONNECT TEAM DASHBOARD. NO CASH TRANSACTIONS WILL BE AVAILABLE ONSITE.

THE 4-DAY ADULT PASS IS \$40 FOR THE ENTIRE EVENT AND INCLUDES A SOUVENIR WRISTBAND FOR IDENTIFICATION.

ALL CHILDREN (12 & UNDER) ARE FREE BUT REQUIRE A \$0 TICKET PURCHASE TO RECEIVE WRISTBAND.



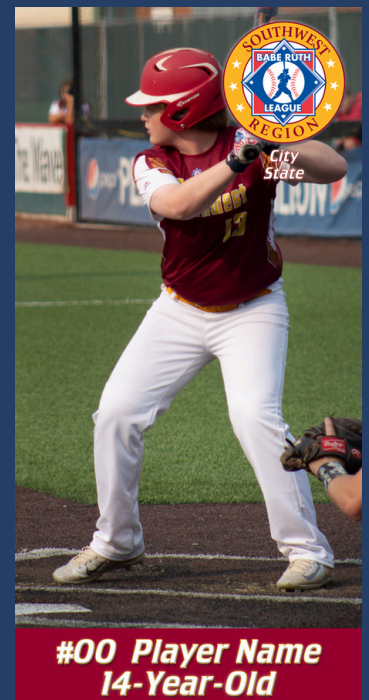
ADULT DAILY TICKET - \$15
ADULT 4-DAY TICKET - \$40
CHILDREN UNDER 12 - FREE

PHOTOS AND SOUVENIRS



OFFICIAL EVENT PHOTOGRAPHY WILL BE SOLD PRE-SALE AND ONSITE BY PHOTOMULES.

OFFICIAL EVENT SOUVENIRS WILL BE SOLD PRE-SALE AND ONSITE.



Decorate the Park Banners

30"X60" PLAYER BANNERS WILL BE HUNG AROUND THE PARK AND WILL BE AVAILABLE FOR PICK UP AT THE CONCLUSION OF THE TOURNAMENT. PURCHASE ON YOUR EVENT CONNECT TEAM DASHBOARD.

DIVISIONS

- 8 YEAR-OLD MACHINE PITCH
- 9 YEAR-OLD
- 10 YEAR-OLD
- 11 YEAR-OLD MAJOR70
- 12 YEAR-OLD MAJOR70
- 13 YEAR-OLD
- 14 YEAR-OLD
- 13-16

**BABE RUTH LEAGUE AFFILIATED TEAMS:
\$350**

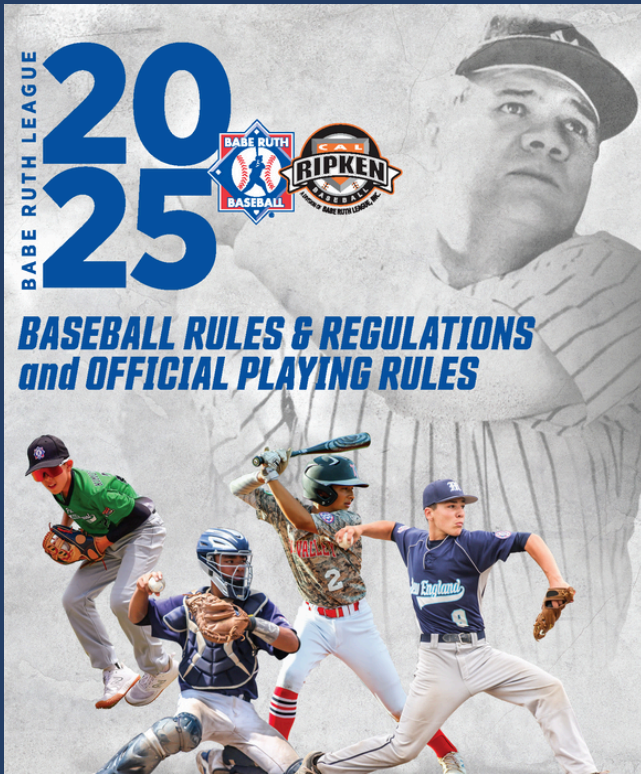


RULES

ALL TEAMS AND GAMES ARE GOVERNED BY THE RULES AND REGULATIONS OF BABE RUTH LEAGUE, INC.

PLEASE SEE THE 2025 BABE RUTH BASEBALL RULEBOOK FOR SPECIFIC RULES GOVERNING GAMEPLAY FOR 9 YEAR-OLD THROUGH 16 YEAR-OLD DIVISIONS.

8 YEAR-OLD MACHINE PITCH RULES ARE AVAILABLE AT BRLMWPREGION.COM.



WORLD SERIES QUALIFYING INFORMATION

2025 WORLD SERIES QUALIFYING AGE GROUPS

- **9 YEAR-OLD CHAMPION**
 - **QUALIFIES FOR 2026 10 YEAR-OLD WORLD SERIES**
- **10 YEAR-OLD CHAMPION**
 - **TRAVEL STIPEND OF \$350 PER ROSTERED PARTICIPANT**
- **11 YEAR-OLD CHAMPION**
 - **QUALIFIES FOR 2026 MAJOR70 WORLD SERIES**
- **12 YEAR-OLD MAJOR70 CHAMPION**
 - **TRAVEL STIPEND OF \$250 PER ROSTERED PARTICIPANT**
- **13 YEAR-OLD CHAMPION**
 - **TRAVEL STIPEND OF \$350 PER ROSTERED PARTICIPANT**
- **14 YEAR-OLD CHAMPION**
 - **TRAVEL STIPEND OF \$250 PER ROSTERED PARTICIPANT**
- **13-16 CHAMPION**
 - **TRAVEL STIPEND OF \$250 PER ROSTERED PARTICIPANT**

WORLD SERIES	LOCATION	REGIONAL END DATE	TEAM TRAVEL REPORT DATE	CHAMPIONSHIP DAY	TEAM DEPARTURE DATE
BABE RUTH SOFTBALL (8u-18u) ALL AGES	FLORENCE, AL	JULY 20 TH	JULY 31 ST	AUGUST 9 TH	AUGUST 10 TH
CAL RIPKEN 8 YEAR OLD MACHINE PITCH	OCALA, FL	JULY 20 TH	AUGUST 1 ST	AUGUST 8 TH	AUGUST 9 TH
CAL RIPKEN 9's-11/70	FLORENCE, AL	JULY 20 TH	JULY 31 ST	AUGUST 9 TH	AUGUST 10 TH
CAL RIPKEN 10 YEAR OLD	VINCENNES, IN	JULY 26 TH	AUGUST 7 TH	AUGUST 16 TH	AUGUST 17 TH
CAL RIPKEN 12/70	BRANSON, MO	JULY 26 TH	AUGUST 6 TH	AUGUST 16 TH	AUGUST 17 TH
BABE RUTH BASEBALL 13 YEAR OLD	JAMESTOWN, NY	AUGUST 2 ND	AUGUST 14 TH	AUGUST 23 RD	AUGUST 24 TH
BABE RUTH BASEBALL 14 YEAR OLD	HOT SPRINGS, AR	JULY 26 TH	AUGUST 7 TH	AUGUST 16 TH	AUGUST 17 TH
BABE RUTH BASEBALL 13-16 YEAR OLD	BRANSON, MO	JULY 26 TH	AUGUST 6 TH	AUGUST 16 TH	AUGUST 17 TH
BABE RUTH BASEBALL 16-18 YEAR OLD	OCALA, FL	JULY 20 TH	AUGUST 1 ST	AUGUST 8 TH	AUGUST 9 TH
CAL RIPKEN 8 YEAR OLD PLAYER PITCH	CHERRY HILL, NJ	JULY 27 TH	AUGUST 15 TH	AUGUST 23 RD	AUGUST 24 TH